

Sonneries réglementaires en usage dans la Marine nationale

1. Service intérieur

Branle-bas du matin

(La diane suivie
du rigodon)

Musical score for Branle-bas du matin. It consists of four staves of music. The first staff is in 6/8 time with a tempo marking of ♩ = 100. The second staff changes to 2/4 time with a tempo marking of ♩ = 160. The third and fourth staves continue in 2/4 time. The piece concludes with a double bar line.

Petit déjeuner

(Une marche suivie
de la soupe 2° reprise)

Musical score for Petit déjeuner. It consists of three staves of music. The first staff is in 6/8 time with a tempo marking of ♩ = 120. The second staff changes to 2/4 time. The third staff continues in 2/4 time and concludes with a double bar line.

Branle-bas du soir

(L'assemblée)

Musical score for Branle-bas du soir. It consists of four staves of music. The first staff is in 2/4 time with a tempo marking of ♩ = 80. The second, third, and fourth staves continue in 2/4 time. The piece concludes with a double bar line.

Aux postes de propreté*(rappel ordinaire)*

$\bullet = 120$

Musical notation for 'Aux postes de propreté' (rappel ordinaire) in 6/8 time. The tempo is marked as quarter note = 120. The piece consists of three staves of music. The first staff has four measures, the second has four measures, and the third has four measures, ending with a double bar line.

Dégager des postes de propreté*(4 mesures du rappel ordinaire suivie de la 2^e reprise de la berloque)*

$\bullet = 120$

Musical notation for 'Dégager des postes de propreté' in 6/8 time. The tempo is marked as quarter note = 120. The piece consists of two staves of music. The first staff has four measures, and the second staff has four measures, ending with a double bar line.

À la disposition des chefs de service*(En avant)*

$\bullet = 160$

Musical notation for 'À la disposition des chefs de service' (En avant) in 6/8 time. The tempo is marked as quarter note = 160. The piece consists of two staves of music. The first staff has four measures, and the second staff has four measures, ending with a double bar line.

**Inspection du commandant
ou l'assemblée**

$\bullet = 80$

Musical notation for 'Inspection du commandant ou l'assemblée' in 3/4 time. The tempo is marked as quarter note = 80. The piece consists of four staves of music. The first staff has four measures, the second has four measures, the third has four measures, and the fourth has four measures, ending with a double bar line.

Rapport des chefs de service
(l'appel des officiers)

Musical score for 'Rapport des chefs de service' (l'appel des officiers). The piece is in 6/8 time and begins with a tempo marking of $\bullet = 120$. The melody consists of three staves of music. The first staff contains the first two measures, the second staff contains the next two measures, and the third staff contains the final two measures, ending with a double bar line.

Rassemblement des maîtres adjoints
(l'appel des premiers maîtres)

Musical score for 'Rassemblement des maîtres adjoints' (l'appel des premiers maîtres). The piece is in 2/4 time and begins with a tempo marking of $\bullet = 120$. The melody consists of two staves of music. The first staff contains the first two measures, followed by a repeat sign. The second staff contains the next two measures, followed by a repeat sign, and ends with a double bar line.

Les permissionnaires à se changer
(le ralliement)

Musical score for 'Les permissionnaires à se changer' (le ralliement). The piece is in 6/8 time and begins with a tempo marking of $\bullet = 120$. The melody consists of two staves of music. The first staff contains the first four measures, and the second staff contains the final two measures, ending with a double bar line.

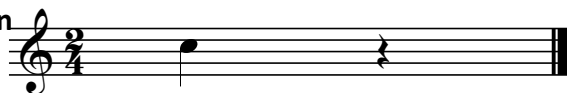
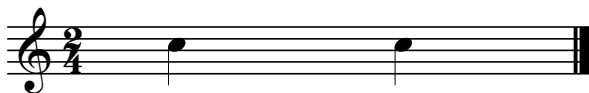
Les permissionnaires à l'appel
(le ralliement suivi de 2 coups de langue)

Musical score for 'Les permissionnaires à l'appel' (le ralliement suivi de 2 coups de langue). The piece is in 6/8 time and begins with a tempo marking of $\bullet = 120$. The melody consists of two staves of music. The first staff contains the first four measures, and the second staff contains the final two measures, ending with a double bar line.

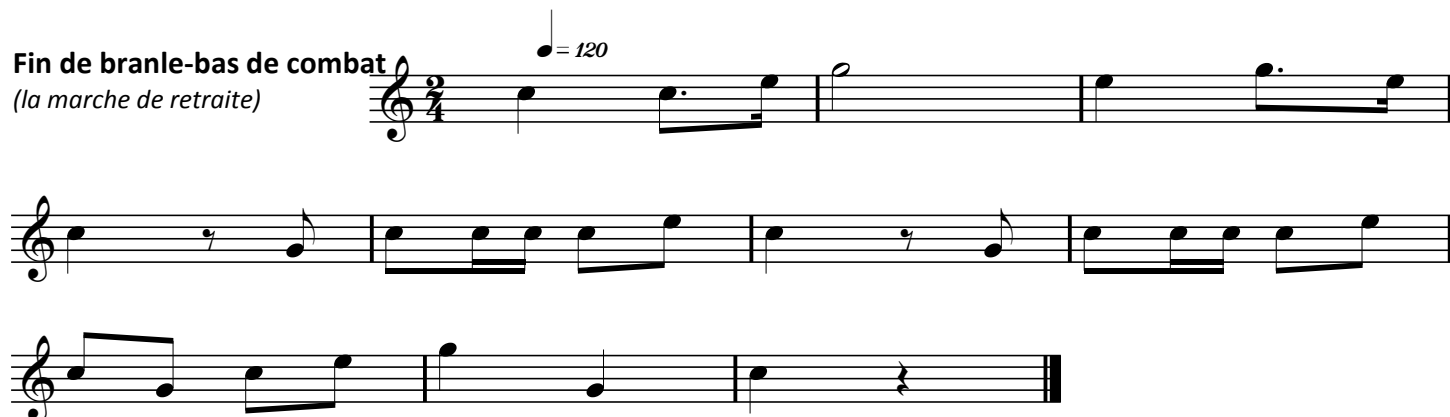
Dans un ¼ d'heure le canot major

(8 mesures de la marche du 1^{er} régiment de Zouaves)

Musical score for 'Dans un ¼ d'heure le canot major' (8 mesures de la marche du 1^{er} régiment de Zouaves). The piece is in 2/4 time and begins with a tempo marking of $\bullet = 120$. The melody consists of two staves of music. The first staff contains the first four measures, and the second staff contains the final four measures, ending with a double bar line.

Canot major dans 5 mn*(1 coup de langue)***Canot major paré***(2 coups de langue)*

2. Exercices et opérations

Branle-bas de combat*(la générale à bord)***Fin de branle-bas de combat***(la marche de retraite)***Aux postes d'alerte***(Pas de charge)*

1° tiers aux postes de veille*(pas de charge suivi
d'1 coup de langue)*

$\bullet = 140$

2° tiers aux postes de veille*(pas de charge suivi de 2 coups
de langue)*

$\bullet = 140$

3° tiers aux postes de veille*(pas de charge suivi de 3 coups
de langue)*

$\bullet = 140$

3. Corps de débarquement**Rappeler le corps de débarquement***(La marche du bataillon)*

$\bullet = 120$

Aux postes d'aviation*(sonnerie n°6
à disposition de l'amiral)*

$\bullet = 120$

Rompre les postes d'aviation

(sonnerie n°6 à disposition de l'amiral suivie de la 2° reprise de la berloque)

♩. = 120

The musical score for 'Rompre les postes d'aviation' is written in 6/8 time. It consists of three staves. The first staff begins with a tempo marking of ♩. = 120. The melody is composed of quarter and eighth notes, with a final half note. The second staff continues the melody with a quarter rest and a quarter note. The third staff concludes the piece with a quarter note, a quarter rest, and a quarter note, ending with a double bar line.

Postes de manœuvre générale

(La diane 1° reprise suivie du pas de gymnastique 2° reprise)

♩. = 100

♩. = 170

The musical score for 'Postes de manœuvre générale' is written in 6/8 time. It consists of two staves. The first staff begins with a tempo marking of ♩. = 100. The melody features eighth-note patterns. The second staff starts with a tempo change to ♩. = 170 and includes a 2/4 time signature change. It concludes with a double bar line.

Rompre les postes de manœuvre

(La diane 1° reprise suivie du pas de gymnastique 2° reprise suivie de la berloque 2° reprise)

♩. = 100

♩. = 170

♩. = 120

The musical score for 'Rompre les postes de manœuvre' is written in 6/8 time. It consists of three staves. The first staff begins with a tempo marking of ♩. = 100. The second staff has a tempo change to ♩. = 170 and a 2/4 time signature change. The third staff has a tempo change to ♩. = 120. The piece concludes with a double bar line.

Hommes de porte-voix et transmission à leurs postes

(Pas de course)

♩. = 140

The musical score for 'Hommes de porte-voix et transmission à leurs postes' is written in 6/8 time. It consists of three staves. The first staff begins with a tempo marking of ♩. = 140. The melody is composed of quarter and eighth notes. The piece concludes with a double bar line.

Un homme à la mer
(le veau et la salade)

$\bullet = 120$

Musical notation for 'Un homme à la mer' in 6/8 time. The piece consists of two staves. The first staff contains the first four measures, and the second staff contains the next four measures. The tempo is marked as quarter note = 120.

Poste de sécurité
(Le pas accéléré)

$\bullet = 120$

Musical notation for 'Poste de sécurité' in 2/4 time. The piece consists of two staves. The first staff contains the first four measures, and the second staff contains the next four measures. The tempo is marked as quarter note = 120.

4. Sonneries d'honneurs

Seules les sonneries spécifiques figurent ci-dessous, pour le cérémonial à terre, se reporter aux sonneries clairon des troupes à pied.

Le garde à vous tribord

$\bullet = 120$

Musical notation for 'Le garde à vous tribord' in 6/8 time. The piece consists of two staves. The first staff contains the first four measures, and the second staff contains the next four measures. The tempo is marked as quarter note = 120.

Le garde à vous babord

$\bullet = 120$

Musical notation for 'Le garde à vous babord' in 6/8 time. The piece consists of two staves. The first staff contains the first four measures, and the second staff contains the next four measures. The tempo is marked as quarter note = 120.

La breloque

$\bullet = 120$

Musical notation for 'La breloque' in 6/8 time. The piece consists of two staves. The first staff contains the first four measures, and the second staff contains the next four measures. The tempo is marked as quarter note = 120.

